

**XTREME  
MEDIA**

India's Largest  
Active LED Display Brand

Join The **Xtreme Media**  
**OUTDOOR** Revolution!



\* Actual on-site appearance may differ from the above simulated scene.

[www.xtreme-media.com](http://www.xtreme-media.com)



\* Actual on-site picture.

## ABOUT XTREME MEDIA

Xtreme Media, **India's Largest Active LED Display Brand** has 2500+ LED displays installed across India. With over 25 years of expertise, the brand is known for its customer-centric **INNOVATION**, built-to-last **QUALITY** and best-in-class **SERVICE**. It is the first company in the LED display industry to provide an **Xtreme Platina up to 7-year warranty** on its LED displays, ensuring peace of mind to its customers.



### CEO & MD, **Sanket Rambhia**

"A passionate techie with an entrepreneurial spirit, Sanket heads Xtreme Media's sales & company's strategy"

**Sanket Rambhia, the visionary MD and Founder of Xtreme Media**, has a deep passion for digital display technology. Through his outstanding strategic acumen, he has successfully guided Xtreme Media to become India's Largest Active LED Display Brand in the LED display industry. He has worn many hats in different departmental areas and finally became the CEO of the company thereafter. He strives to marry software and hardware solutions, thereby creating Indianized products of international quality suitable for Indian market. Motivated by his unwavering ambition, he aspires to attain global leadership in the LED display solutions industry.

**XTREME  
MEDIA**

**LARGEST INSTALLATION  
BASE OF**

**2500<sup>+</sup>**

**SCREENS PAN INDIA**

Covering more than 3,50,000 sq. ft. area.

**HIGHEST IN THE INDUSTRY**

Customer-centric **INNOVATION** | Unparalleled **QUALITY** | Pan-India Customer **SERVICE**

[www.xtreme-media.com](http://www.xtreme-media.com)

INTRODUCING  
**XTREME PLATINA**

“Xtreme Media is proud to offer  
**Xtreme Platina up to 7-year warranty** on its LED displays”



This confidence stems from our high quality **Built to Last** display products.

\* 7-year warranty is subject to specific product line or series

# PEACE OF MIND

"LED displays are not just about hardware, but also about **software solutions**"

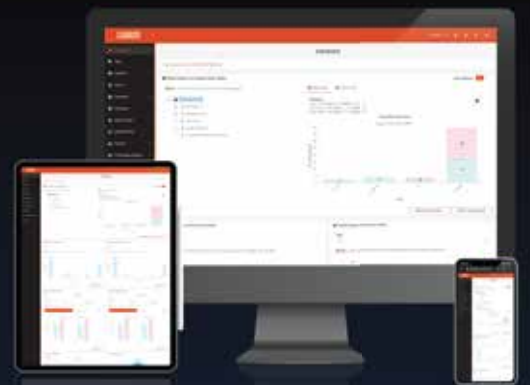


## Vigilant - IoT Monitoring

**Remotely monitors** display health parameters like temperature, power consumption, voltage, current, and cabinet on/off status etc.

## XtremeSignage - Content Management Platform

Centrally **schedule and manage content** across all your screens with a click.



## Security

Banking level security through **256-bit encryption** on all our displays.

“India’s **largest outdoor LED videowall**”

India’s largest outdoor LED videowall is installed on the exteriors of a renowned cultural space, leaving visitors in awe. This stunning installation stands as a true visual masterpiece. Its sheer magnificence captivates every onlooker.



※ Actual on-site picture.

<b>Client Name</b>	<b>:</b>	<b>NMACC</b>
<b>Product Name</b>	<b>:</b>	<b>Earth</b>
<b>Pixel Pitch</b>	<b>:</b>	<b>10mm</b>
<b>Size</b>	<b>:</b>	<b>146.9ft x 39.3ft</b> <b>103ft x 39.3ft</b>
<b>Location</b>	<b>:</b>	<b>BKC, Mumbai</b>

# EARTH SERIES

"Energy-efficient displays for sustainable messaging"



**Pixel Pitch** : 2.6mm, 2.9mm, 3.9mm, 5.7mm, 6.67mm, 8mm & 10mm

**Applications** : OOH, Shopping malls, Building HQ, etc.

Your search for the perfect outdoor displays ends here! The high brightness leads to higher daytime visibility and lightweight cabinets provide greater flexibility to install these displays at any location. Furthermore, these common cathode LED displays help in reducing energy consumption, thus lowering operating costs.



Green tech that lowers power consumption by 40%



Excellent heat dissipation with aluminum backshell



High brightness of up to 10,000 nits



Weather and dust proof with IP66 rating



## “India's first **floating LED screen**”

Floating on the waters of the Bandra-Worli Sea Link, this is India's first-ever floating LED display. A groundbreaking innovation in the LED display industry, this project sets a new benchmark and reshapes the perception of installing LED displays in places never imagined before.



\* Actual on-site picture.

**Product Name** : **Earth DIP 3-in-1**

**Pixel Pitch** : **10mm**

**Size** : **65.6ft x 16.4ft**  
**49.2ft x 13.1ft**

**Location** : **Bandra worli/  
Juhu chowpatty**



# EARTH DIP SERIES

"Experience super high brightness through **3-in-1 DIP technology**"



**Pixel Pitch** : 8mm & 10mm

**Applications** : OOH, Highways, Stadiums etc.

Earth DIP series comes with India's First 3-in-1 DIP technology which offers super high brightness levels with reduced power consumption. The rugged built of these LED displays make them ideal for harsh environments.



Power saving  
up to 40%



Die-cast  
aluminum cabinets



Super high brightness  
of up to 10,000 nits



Rugged & suitable  
for harsh environments



“South Asia's **largest outdoor transparent LED display**”

Covering two floors, this LED display is South Asia's largest transparent outdoor LED display, transforming the retail landscape. Located on Mumbai's bustling Linking Road, the screen captivates passersby with dynamic visuals. Its transparent design offers a stunning glimpse into the store's interiors.

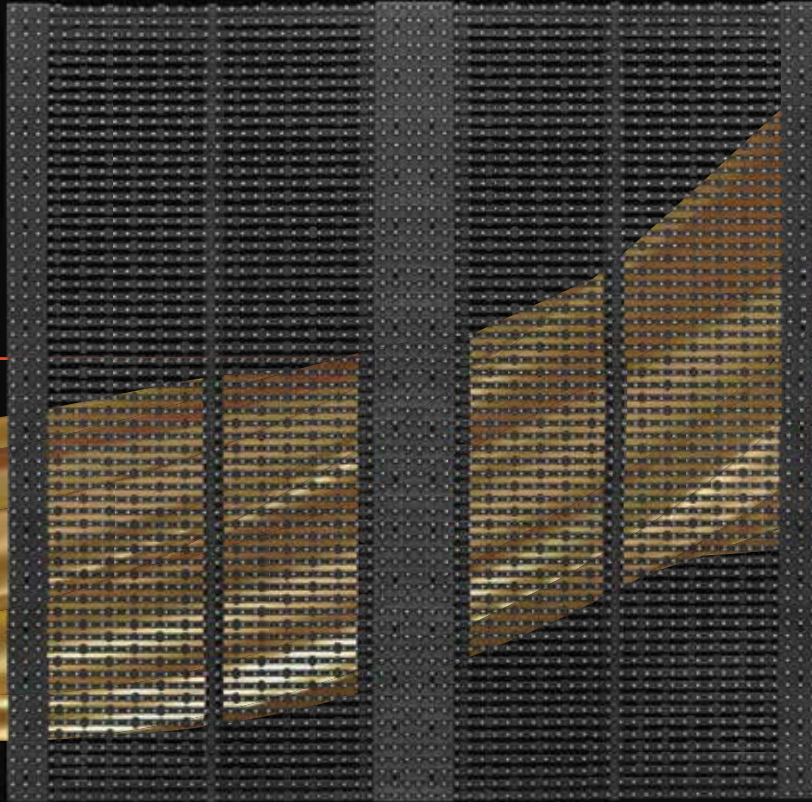


\* Actual on-site picture.

<b>Client Name</b>	:	<b>Bestseller</b>
<b>Product Name</b>	:	<b>Iris OD</b>
<b>Pixel Pitch</b>	:	<b>3.9mm - 7.8mm</b>
<b>Size</b>	:	<b>55.7ft x 29.5ft</b>
<b>Location</b>	:	<b>Linking road, Bandra</b>

# IRIS OD SERIES

“Experience the **brilliance of transparency**”



**Pixel Pitch** : 3.9-7.8mm, 15.6-15.6mm & 15.6-31.2mm

**Applications** : Retail stores, Museums, Building façades, etc.

Although transparent in nature, the LED displays of this series are very bright, offer visibility and are designed to wrap the façade or outdoor surfaces such as retail store windows.



Transparency of  
up to 45%



Sleek and  
lightweight



High brightness  
of up to 8,000 nits

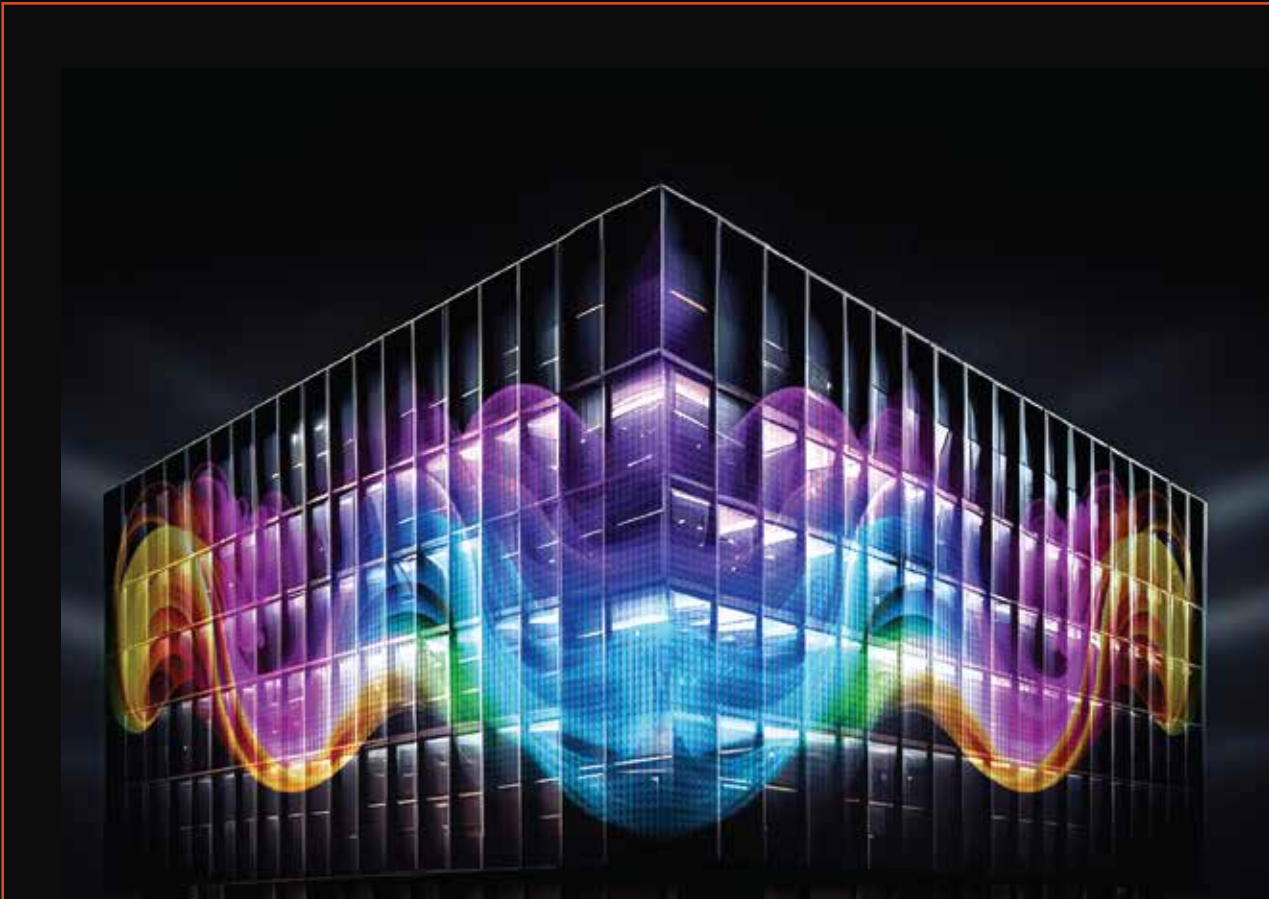


Weather and dust proof  
with IP65 rating



## “Transforming urban landscapes”

Crafted to illuminate building façades, this LED display redefines architectural aesthetics. It enhances the building exteriors with vibrant, dynamic visuals - a true game-changer in modern design.



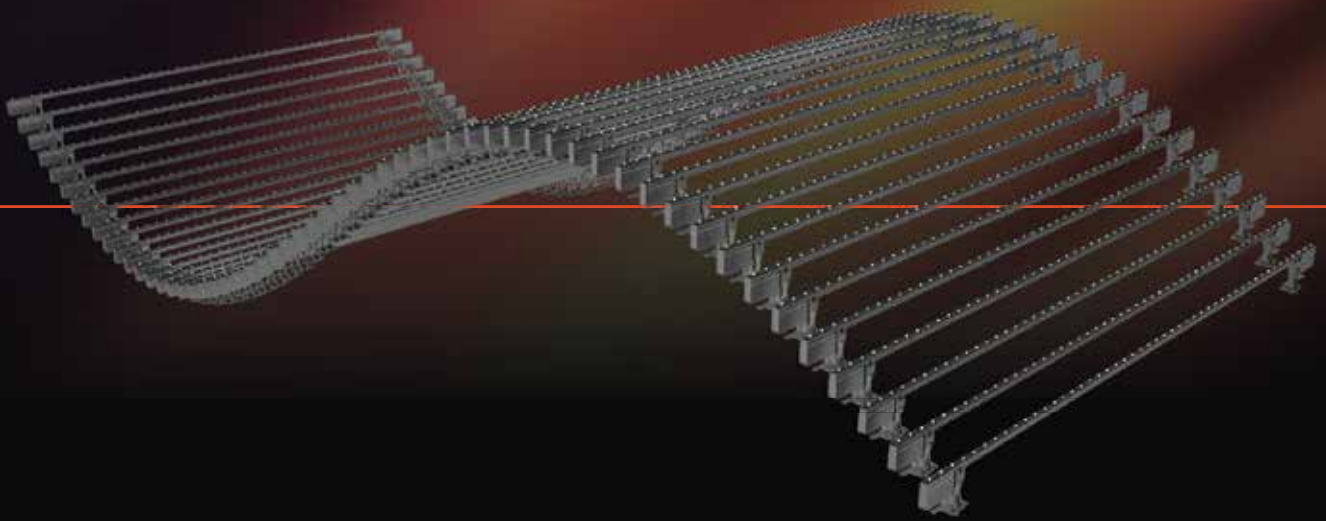
※ Actual on-site appearance may differ from the above simulated scene.

**Product Name** : **Iris Media façade**

**Pixel Pitch** : **31.25mm**

# IRIS MEDIA FAÇADE

“Creating an **illuminative effect**”



**Pixel Pitch** : 31.25-100mm

**Applications** : **Building façades**

Xtreme Media's Iris Media Façade LED displays are the perfect solution for creating an illuminative effect for the building façades. A combination of cutting-edge technology and artistic brilliance, these displays allow you to transform the exterior of your structure into a mesmerizing visual spectacle.



Minimal structure  
required



Highly  
customizable



High brightness  
DIP 3-in-1 lamps



Weather and dust proof  
with IP65 rating



“Creating an **enthralling digital experience**”

Installed at a high-traffic bus stop, these LED displays captivate thousands of passersby daily. Their high brightness levels ensure vivid, eye-catching visuals even in daylight. A powerful medium for dynamic and impactful communication.



\* Actual on-site picture.

<b>Client Name</b>	<b>:</b>	<b>Capital Group</b>
<b>Product Name</b>	<b>:</b>	<b>Nyx OD</b>
<b>Pixel Pitch</b>	<b>:</b>	<b>4mm</b>
<b>Size</b>	<b>:</b>	<b>24ft X 5.2ft 20ft X 5.2ft</b>
<b>Location</b>	<b>:</b>	<b>Western Express Highway</b>

# NYX OD SERIES

"Robust outdoor displays"



**Pixel Pitch** : 2.5mm, 3mm, 4mm, 5mm, 8mm & 10mm

**Applications** : OOH, Smart cities, Malls, etc.

These robust and durable LED displays are easy on the pocket. Using high quality lamps, these displays come with high brightness providing clear visibility even in daylight.



Die-cast  
aluminum cabinets



Easy installation  
and maintenance



High brightness  
of up to 6,000 nits



Rugged and  
weatherproof



# XTREME MEDIA

## OUR MARQUEE CLIENTS



Come, experience the magic

### Mumbai HO

B/29-31, 3<sup>rd</sup> Floor, Shriram Industrial Estate, Wadala (W) - 400031

### Delhi

720 & 721, 7<sup>th</sup> Floor, Tower-4, Assotech Business Cresterra, Sector 135, Noida - 201304.

### Bengaluru

406, 3<sup>rd</sup> Floor, Prestige Atrium, Central St, Shivaji Nagar, Karnataka - 560001

### Chandigarh

A-601, 6<sup>th</sup> Floor, Bestech Business Tower, Sector 66, Mohali, Punjab - 160059

### Pune

Infinity Tower, CTS 129/B2, 1, Law College Rd, Apex Colony, Pune - 411004

### Hyderabad

Nagarjuna Hills Rd, Mothi Nagar, Punjagutta, Telangana - 500082

### Indore

18-C, Chandra Nagar MR-9, Behind Amarvilas Hotel, MP - 452010

### Guwahati

Planet Prodigy, Solapara Rd, opposite Hotel Landmark, Guwahati, Assam - 781008



Our LED Displays are certified with

